

DEMOLITION ELECTRICAL PLAN
SCALE: 1/8"=1'-0"

DEMOLITION PLAN NOTES

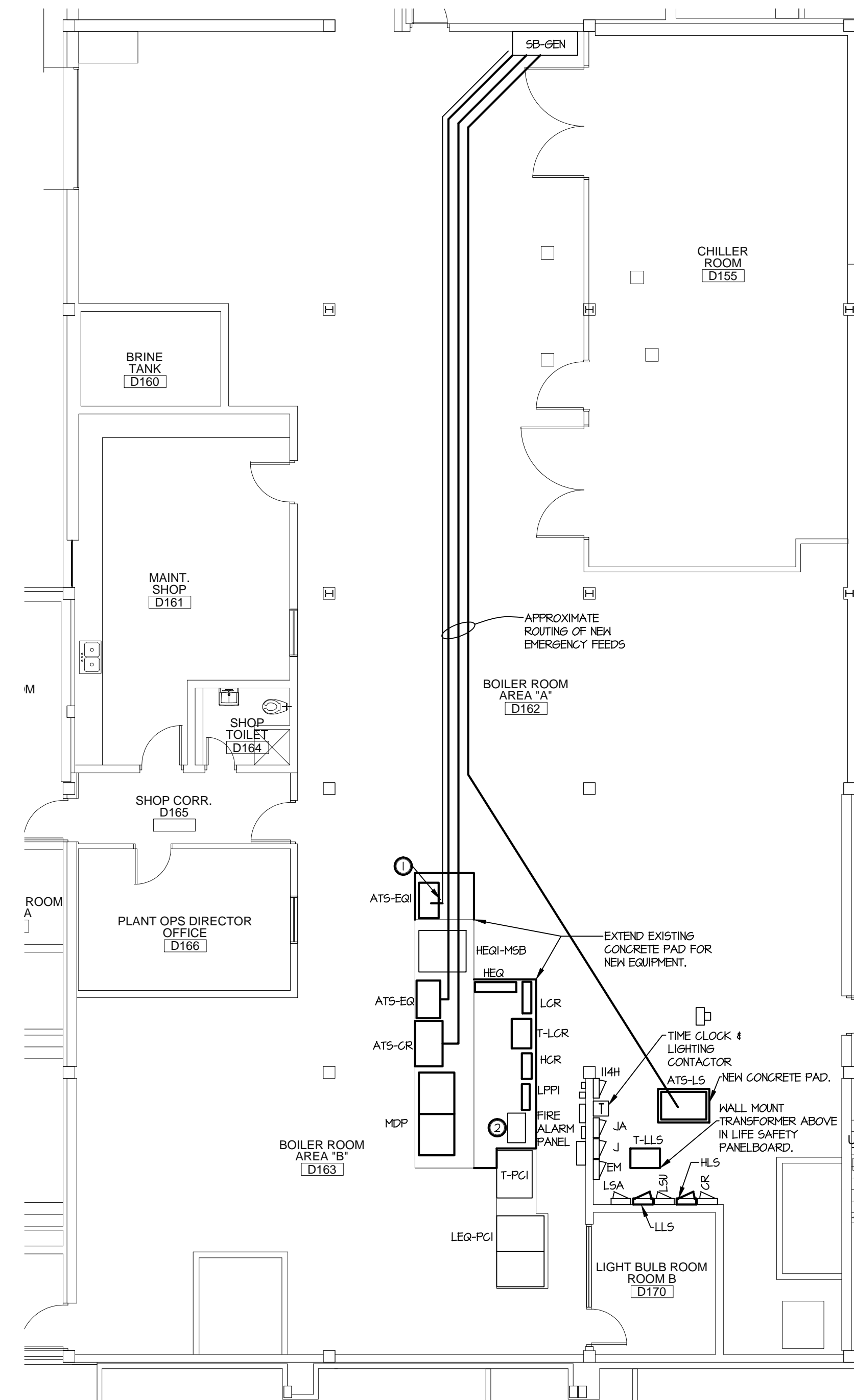
- ◇ E.G. SHALL DISCONNECT AND RELOCATE EXISTING 1125 KVA TRANSFORMER.
- ◇ E.G. SHALL DISCONNECT AND RELOCATE EXISTING MRI TRUCK METER TO NEW LOCATION.

REVISED PLAN NOTES

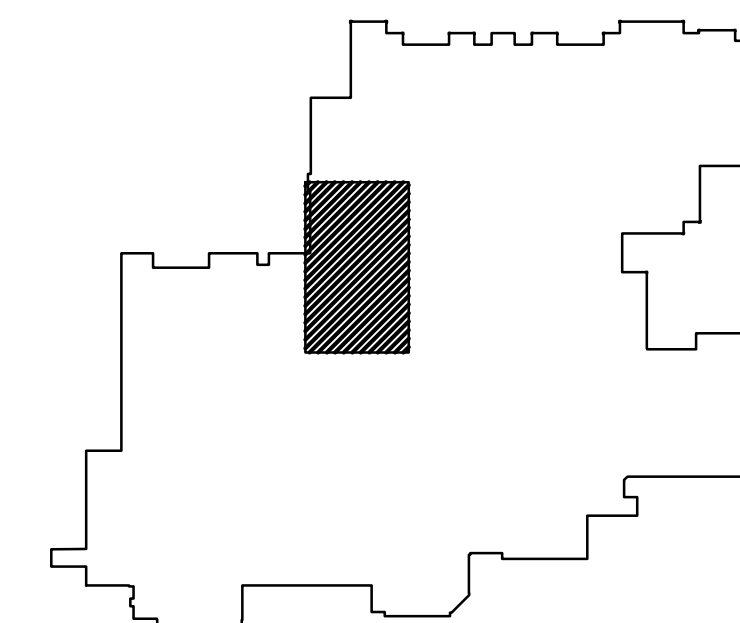
- E.G. SHALL INTERCEPT EXISTING 800A EMERGENCY FEEDER AND RE-ROUT TO NEW 800A ATS EQL.
- E.G. SHALL INSTALL RELOCATED 1125 KVA TRANSFORMER AT LOCATION SHOWN.

GENERAL ELECTRICAL NOTES

- E.G. SHALL COORDINATE WITH HOSPITAL AND PROJECT MANAGER FOR ELECTRICAL SHUT-DOWN. MAXIMUM ELECTRICAL SHUT-DOWN TIME SHALL BE 4 HOURS. ALL SHUT DOWNS SHALL BE "AFTER-HOURS".
- E.G. SHALL PROVIDE TEMPORARY CABLING TO KEEP EXISTING ELECTRICAL SWITCHGEAR CONNECTED UNTIL NEW GEAR IS SET IN PLACE AND READY TO ACCEPT EXISTING LOADS.
- E.G. SHALL SUBMIT A PLANSUBSEQUENCE TO THE HOSPITAL AND PROJECT MANAGER FOR APPROVAL PRIOR TO STARTING DEMOLITION.
- E.G. SHALL COORDINATE THE SHUT OF THE ELECTRICAL SERVICE WITH THE UTILITY COMPANY.



REVISED ELECTRICAL PLAN
SCALE: 1/8"=1'-0"



KEY PLAN
SCALE: NO SCALE

4821 Henry St.
Muskegon, MI 49441
P 231-798-4328
F 231-798-4328
rhoades@rhoades.com
rhoades.com

Rhoades Engineering
Consulting Engineers
Mechanical - Electrical
www.rhoadesengineering.com



CASS COUNTY MEMORIAL HOSPITAL
ATLANTIC, IOWA

PROJECT TITLE:
RENOVATIONS TO:

DATE: 5/1/17
ISSUED FOR: BIDS & CONST.

PROJECT No.
4233A

DRAWING TITLE:
MECHANICAL DEMO/REVISED PLANS

SHEET No.

E-1

Monday, May 01, 2017 at 10:00am E:\2333 Cass County Memorial Hospital\Electrical\Drawings - Chait Tina

This drawing is an instrument of service and shall remain the property of Rhoades Engineering Corporation whether or not the project for which it is intended is constructed. This drawing and the concepts and ideas contained herein shall not be used, reproduced, revised, or retained without the express written approval of Rhoades Engineering Corporation.

Submission or distribution of this drawing to meet official regulatory requirements or for other purposes in connection with the project is not to be construed as publication in derogation of any of the rights of Rhoades Engineering Corporation.

Verify existing conditions. Any discrepancies, non-compliance, or unclear items shall be reported to Rhoades Engineering Corporation, in writing, and shall be resolved before the commencement of work.

Any abridgment or violation of the rights of Rhoades Engineering Corporation shall be prosecuted to the fullest extent of the law.

Do Not Scale Drawings!

© 2017 Rhoades Engineering Corporation Muskegon, Michigan